

ENVIROWALL™

RETAINING WALL BLOCKS

LANDSCAPING

HOME
IMPROVEMENT

GARDENING

EnviroWall™ Blocks provide an aesthetic solution to managing grade changes and supporting vegetation for a variety of applications. Designed for ease of shipping, handling and installation, EnviroWall™ offers an array of benefits.

EASE OF SHIPPING & HANDLING



- Removable side rails allow blocks to be nested for transport efficiency and cost savings
- Lightweight at 2.5lbs each



DESIGN COMPONENTS

- Made in the USA
- Allows use of compost sock for additional erosion control
- Construct walls up to 5' tall with little to no tools or equipment

VEGETATION SUPPORT



- Designed with holes for roots to grow through the system, maximizing stability.
- Able to support various vegetation and plant life



CARBON FOOTPRINT

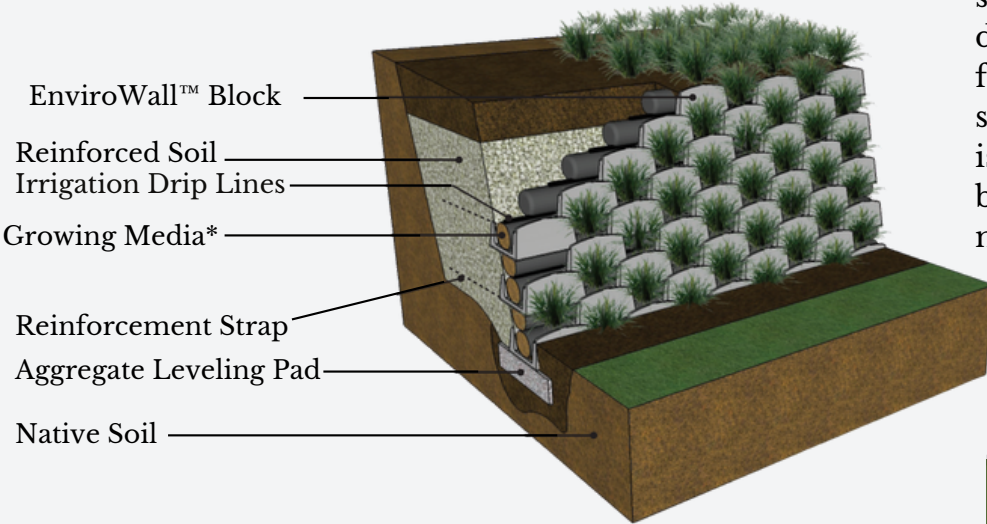
- Able to calculate carbon footprint when using compost that is organic, mature, free of weeds and debris



ENVIROWALL™

RETAINING WALL BLOCKS

The EnviroWall™ Blocks compose a vertical living wall system that provides a front face to existing structurally sound slope backgrounds. The technology and design of each block allows vegetation to flourish within the structure, making the system visually appealing. EnviroWall™ is not only environmentally compliant, but is simple to handle, install, and maintain.



EnviroWall™ Block

Reinforced Soil

Irrigation Drip Lines

Growing Media*

Reinforcement Strap

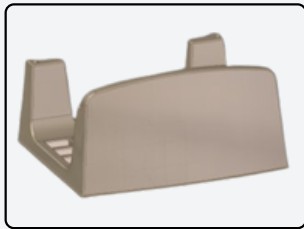
Aggregate Leveling Pad

Native Soil

AVAILABLE COLORS



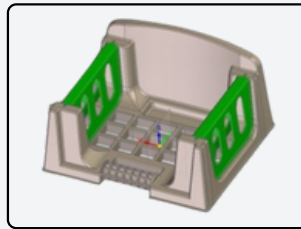
*Able to be filled with loose soil or compost sock.



**LIGHTWEIGHT
DESIGN**



**REMOVABLE
SIDE RAILS**



**STACKABLE
PIECES**



Each EnviroWall™ block has been rigorously tested in engineering labs and proves 5-times stronger than the service life of alternative slope facings that structures under five feet would generally require.

FLOWERBEDS | LANDSCAPE | DRIVEWAYS | GARDENS

